



CATALOG 2023



Η ΕΤΑΙΡΕΙΑ

Ξεκινώντας την νέα Τουριστική περίοδο θα θέλαμε να σας παρουσιάσουμε τους καταλόγους με τα νέα προϊόντα μας με τα οποία φροντίζουμε να βελτιώνουμε την γκάμα μας, την ποιότητα και τις τιμές μας.

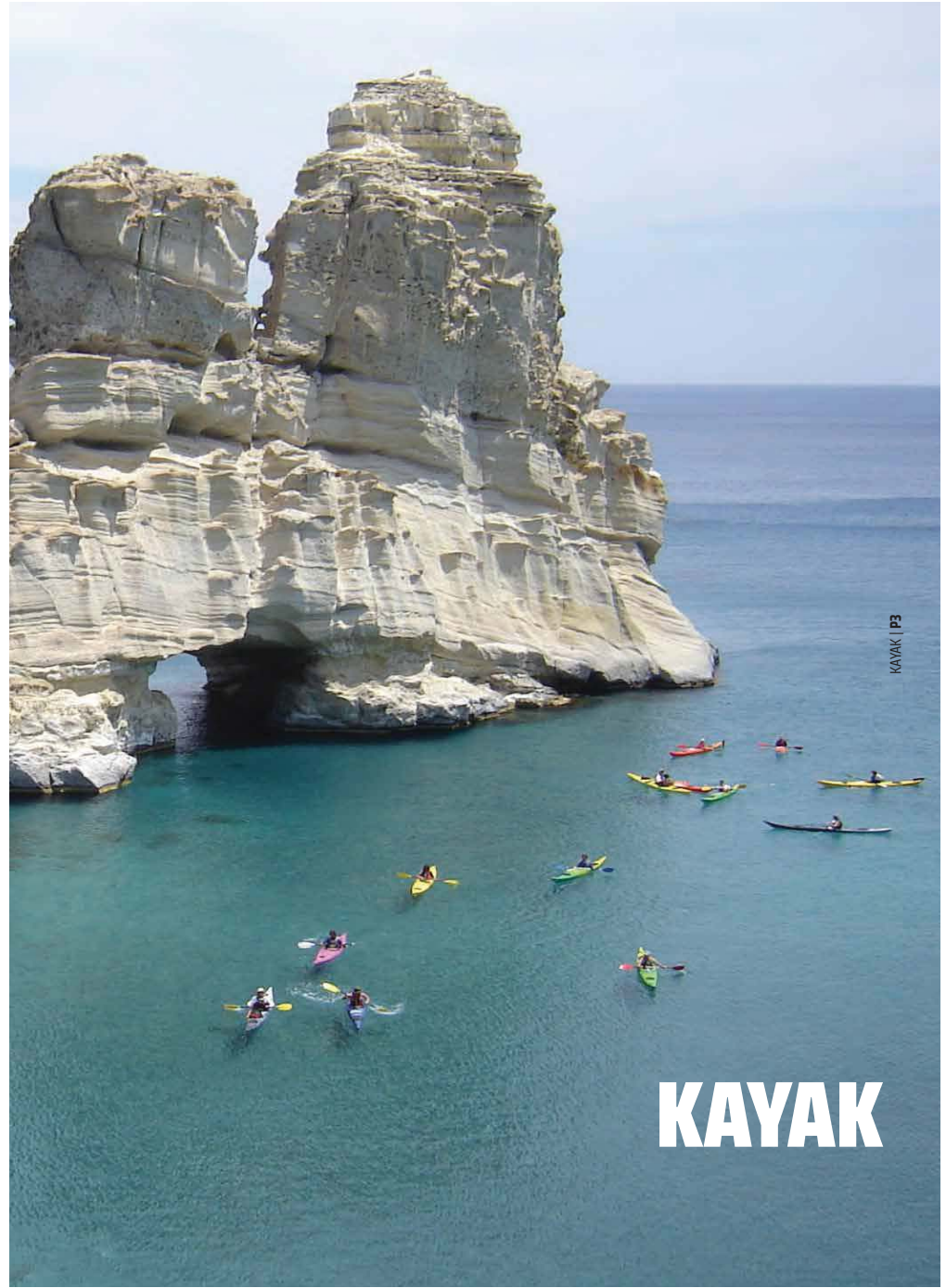
Η Aquacenter είναι μία πρωτοπόρος εταιρία με έδρα το Ηράκλειο Κρήτης που ιδρύθηκε το 2001 και δραστηριοποιείται στην εμπορία των ειδών θαλάσσιων σπορ, ειδών πλεύσης και εξοπλισμών παραλίας. Ως πρωτοπόρος στο κομμάτι των θαλάσσιων σπορ προσφέρει καινοτόμα προϊόντα σε εμφάνιση ποιότητα και επιδόσεις με μια τεραστία γκάμα για τους επαγγελματίες του χώρου ακολουθώντας πάντα τις νέες τάσεις για τον εξοπλισμό της επιχείρησή σας.

Με τη συνεχή βελτίωση των υλικών, των προϊόντων και των υπηρεσιών μας έχουμε καταφέρει να δημιουργήσουμε ένα ολοκληρωμένο δίκτυο παραγγελιών και παραδόσεων για τους πελάτες μας, με αντιπροσώπους και υποκαταστήματα σε πολλές χώρες της Ευρώπης. Κλείνοντας θα θέλαμε να σας ευχαριστήσουμε για την προσοχή και να σας ευχηθούμε μια δημιουργική και αποδοτική χρονιά.

Για περισσότερες φωτογραφίες και τεχνικά χαρακτηριστικά των προϊόντων μας επισκεφτείτε το site μας www.aquacenter.gr

INDEX

KAYAK.....	3
PEDALOS.....	27
SPACEBUGGY.....	45
SAXDOR.....	49
SEASCOOTERS.....	53
WATERPARKS.....	63





Rainbow



Rainbow



KAYAK



Rainbow

**KOALA****FEATURES**

- Length: 2,49m
- Width: 76cm
- Height: 32cm
- Weight: 16kg
- Max rider weight: 100kg
- Handles: 3

Basic equipment

- Drain plug

Optionally

- Paddle
- Seats
- Mud flaps

FUNNY**FEATURES**

- Length: 2,94m
- Width: 72cm
- Height: 35cm
- Weight: 18kg
- Max rider weight: 100kg
- Handles: 2

Basic equipment

- Storage space behind the seat
- Drain plug
- Elastic net

Optionally

- Paddle
- Seat
- Mud flaps

WTS 268**FEATURES**

- Length: 2,68m
- Width: 67cm
- Height: 30cm
- Weight: 18kg
- Max rider weight: 100kg
- Handles: 4

Basic equipment

- Storage space behind the seat
- Drain plug
- Elastic net

Optionally

- Paddle
- Seat
- Mud flaps

WTS 295**FEATURES**

- Length: 2,95m
- Width: 78cm
- Height: 30cm
- Weight: 19kg
- Max rider weight: 100kg
- Handles: 4

Basic equipment

- Storage space in front and behind the seat
- Drain plug
- Elastic net

Optionally

- Paddle
- Seat
- Mud flaps

ORCA**FEATURES**

- Length: 4,35m
- Width: 85cm
- Height: 32cm
- Weight: 30kg
- Max rider weight: 200kg
- Handles: 2

Basic equipment

- Storage space in front and behind the seat
- Drain plug

Optionally

- Paddle
- Seats
- Mud flaps

WTS 370**FEATURES**

- Length: 3,70m
- Width: 82cm
- Height: 35cm
- Weight: 29kg
- Max rider weight: 200kg
- Handles: 4

Basic equipment

- Storage space in front and behind the seat
- Drain plug
- Elastic net

Optionally

- Paddle
- Seat
- Mud flaps

WTS 400**FEATURES**

- Length: 4,00m
- Width: 83cm
- Height: 35cm
- Weight: 30kg
- Max rider weight: 200kg
- Handles: 4

Basic equipment

- Storage space in front and behind the seat
- Drain plug
- Elastic net

Optionally

- Paddle
- Seat
- Mud flaps

WTS 365**FEATURES**

- Length: 3,65m
- Width: 78cm
- Height: 35cm
- Weight: 28kg
- Max rider weight: 200kg
- Handles: 4

Basic equipment

- Storage space in front and behind the seat
- Drain plug
- Elastic net

Optionally

- Paddle
- Seat
- Mud flaps



TRANSPARENT KAYAK



TRANSPARENT KAYAK

FEATURES

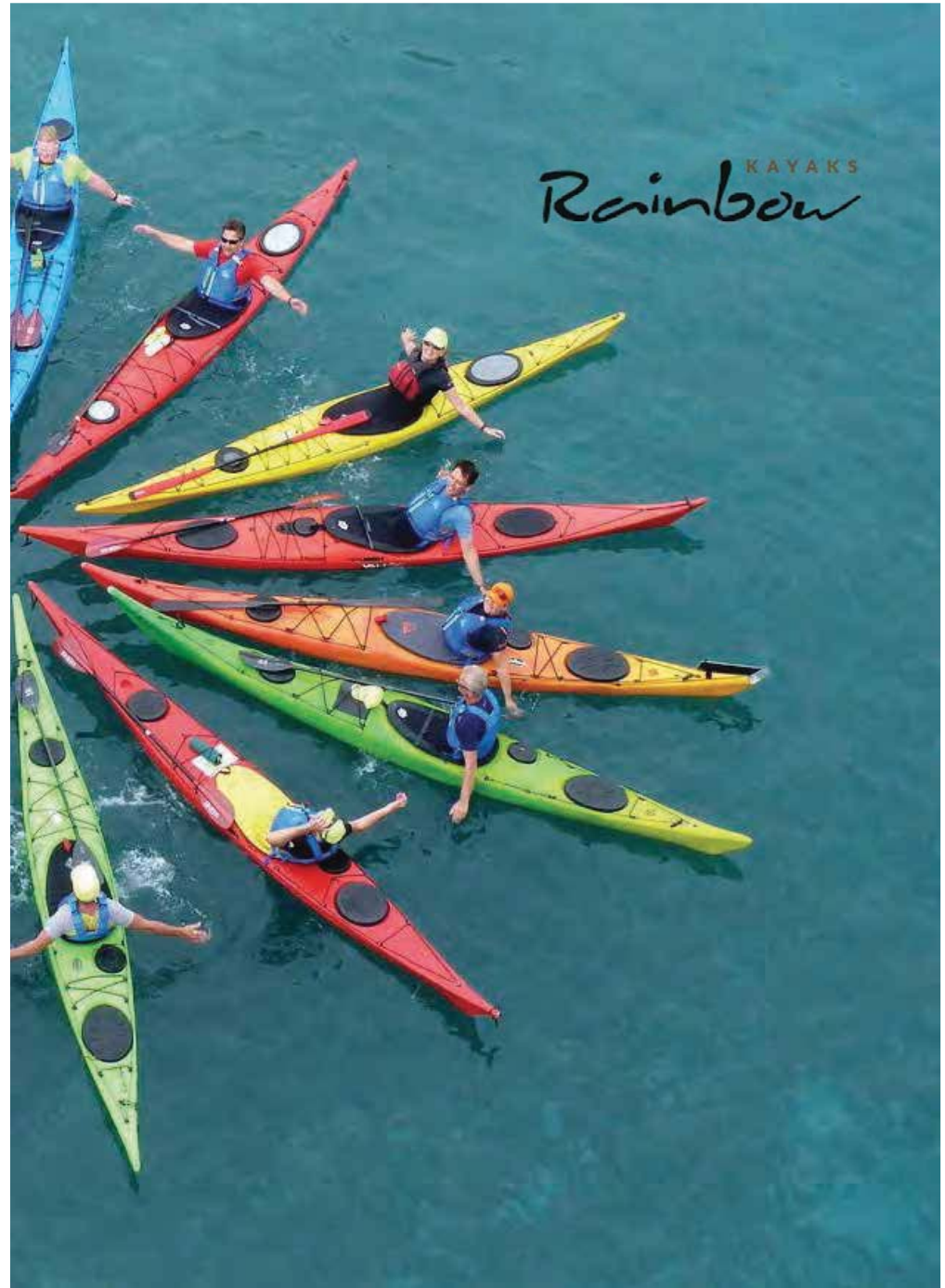
- Fully Transparent 100% clear kayak hull helps you discover a whole new world while paddling, and you'll be amazed at what you can see: corals, reefs, fish and marine life.
- Light Weight Only 1/2 of that same thickness glass, easy to carry.
- A removable lightweight aluminum frame, minimizing space consumption, thus making transporting and storage easy and convenient.
- Big Space Capacity to carry 2 adults.

Dimensions

- Length: 336 cm
- Width: 90 cm
- Height: 35 cm
- Weight: 20 kg
- Capacity: 200 kg
- Material: polycarbonate

Standard equipment

- Transparent seats 2
- Oval balloon in orange color for visibility
- Anodized aluminum internal frame





KAYAK | PTB



SIT-IN KAYAK



KAYAK | PTB

RAINBOW ATLANTIS 5,45

FEATURES

- Length: 5,45m
- Width: 64cm
- Height: 39cm
- Weight: 36kg
- Max rider weight: 220kg
- Handles: 2

Basic equipment

- Storage space in front and behind the seat
- Drain plug
- Elastic net

Optionally

- Paddle
- Mud flaps
- Rudder system

RAINBOW LASER 5,12

FEATURES

- Length: 5,12m
- Width: 59cm
- Height: 45cm
- Weight: 29,5kg
- Max rider weight: 100kg
- Handles: 2

Basic equipment

- Storage space in front and behind the seat
- Drain plug
- Elastic net

Optionally

- Paddle
- Mud flaps
- Rudder system

Additional sizes
5,5m

RAINBOW OASIS 3,90

FEATURES

- Length: 3,90m
- Width: 63cm
- Height: 42cm
- Weight: 19kg
- Max rider weight: 100kg
- Handles: 2

Basic equipment

- Storage space behind the seat
- Drain plug
- Elastic net

Optionally

- Paddle
- Mud flaps
- Rudder system

Additional sizes
2,9m + 3,5m + 4,3m + 4,95 twin



KAYAK | PTZ



FISHING KAYAK



KAYAK | PB

ANGLER 10 FISHING

FEATURES

- Length: 3,16m
- Width: 86cm
- Height: 37cm
- Weight: 33kg
- Max rider weight: 150kg
- Handles: 4

Basic equipment

- Stainless steel anatomic seat
- Rudder system
- Storage space in front and behind the seat
- Drain plug
- Rod holders
- Elastic net

Optionally

- Paddle
- Machine support base
- Pedal system

ANGLER 10 FISHING

FEATURES

- Length: 3,15m
- Width: 87cm
- Height: 32cm
- Weight: 25kg
- Max rider weight: 100kg
- Handles: 4

Basic equipment

- Storage space in front and behind the seat
- Drain plug
- Rod holders
- Elastic net

Optionally

- Seat
- Paddle

Rainbow VULCANO FISHING

FEATURES

- Length: 4,60m
- Width: 67cm
- Height: 35cm
- Weight: 22kg
- Max rider weight: 100kg
- Handles: 4

Basic equipment

- Storage space in front and behind the seat
- Drain plug
- Rod holders
- Elastic net
- Seat

Optionally

- Paddle
- Mud flaps

Rainbow KOI FISHING

FEATURES

- Length: 4,33m
- Width: 77cm
- Height: 35cm
- Weight: 33kg
- Max rider weight: 150kg
- Handles: 4

Basic equipment

- Stainless steel anatomic seat
- Storage space in front and behind the seat
- Drain plug
- Rod holders
- Elastic net

Optionally

- Paddle
- Rudder system



KAYAK | P14



FISHING KAYAK



KAYAK | P15

KAYAK FISHING PEDAL 10

FEATURES

- Length: 3,16m
- Width: 86cm
- Height: 37cm
- Weight: 36kg
- Max rider weight: 150kg
- Handles: 4

Basic equipment

- Stainless steel anatomic seat
- Pedal system
- Rudder system
- Storage space in front and behind the seat
- Drain plug
- Rod holders
- Elastic net

Optionally

- Paddle
- Machine support base





KAYAK | PT6



FISHING KAYAK



KAYAK | PT7

KAYAK FISHING PEDAL 13

FEATURES

- Length: 3,98m
- Width: 86cm
- Height: 37cm
- Weight: 41kg
- Max rider weight: 170kg
- Handles: 4

Basic equipment

- Stainless steel anatomic seat
- Pedal system
- Rudder system
- Storage space in front and behind the seat
- Drain plug
- Rod holders
- Elastic net

Optionally

- Paddle
- Machine support base



KAYAK | P18



KAYAK | P19

FISHING KAYAK



KAYAK FISHING PEDAL 12

FEATURES

- Length: 3,63m
- Width: 83cm
- Height: 32cm
- Weight: 36kg
- Max rider weight: 160kg
- Handles: 4

Basic equipment

- Stainless steel anatomic seat
- Pedal system
- Rudder system
- Storage space in front and behind the seat
- Drain plug
- Rod holders

Optionally

- Paddle
- Machine support base





KAYAK | P20



FISHING KAYAK



KAYAK | P21

KAYAK FISHING FLIPPER 12.5

Size: 3750x890x370mm / 147.63x35.04x14.57inch

Load bearing: 120kg/308lbs

G.W.: 44kg /97lbs **N.W.:**42.4kg/93.48lbs

Usage: Fishing, Surfing , Cruising

Rated passenger capacity: 1 person

Recommend users: Adult

Standard parts(For Free):

- flipper system
- adjustable aluminum frame backseat
- Rudder system
- sliding rail
- 2x flush rod holders
- rear round hatch
- front fishing lid
- rubber stopper
- drain plug
- D-shaped button
- carry handles
- bungee cords
- EVA mat

Optional accessories(Need extra pay): 1x paddle 1x middle hatch holder(replace flipper)



FISHING PEDALOS

H2O FISHING



H2O Fishing is the first pedal boat completely made of polyethylene dedicated to fishing. Robust and unsinkable, H2O Fishing is ideal for sea fishing, lake, closed waters and calm rivers. Equipped with 10 position rod holders and 4 adjustable trolling rod holders, 2 transport wheels, H2O can be customized with motorization and predisposition for mounting the echo sounder. Approved for 4 people.

Specifications

- Length: 3.30 m
- Width: 155 cm
- Height: 90cm
- Weight: 145 kg

Standard equipment

- 10 position rod holder
- 4 adjustable trolling rod holders
- 2 transport wheels

Optional

- Electric motor
- Preparation for echo sounder



HARD BELLY

HARD BELLY is the first belly boat made of rigid material (polyethylene) molded with the rotational system. Unsinkable thanks to its newly designed structure, very similar to modern kayaks, with a hollow interior. Hard belly is ideal for rental by sport fishing structures and fishing guides, as it is not subject to holes and unpleasant damages due to incorrect or excessive use being. Customizable with an electric motor.

Specifications

- Length: 1.37 m
- Width: 100 cm
- Weight: 20 kg



LIVEWELL

The biggest, oxygenated tank in the world for bait fishes will follow you in perfect conditions and ready to use. From kayaks, boats or inflatable boats, but also from the seashore or from belly boats, your baits will be easily accessible and you won't have to sacrifice space due to heavy and bulky installation.

Specifications

- Dimension: 70 x 31 x 17
- Weight: 1.5 kg
- Volume: 19lt

KAYAK PADDLES



1. Fiberglass shaft .
Extra strong plastic blade with 40% fiberglass.
2. Aluminum collapsible paddle with polyester shaft.
3. Aluminum paddle with Polypropilene blade 40% fiberglass.
4. Aluminum paddle with Polypropilene blade 40% fiberglass.
5. Collapsible aluminum paddle

KAYAK SEAT



Premium seat



Deluxe seat



Anatomic seat

KAYAK ACCESSORIES



Trolley



Trolley sit on top



Waterproof bag 20L



Waterproof mobile case



Swivel Rod Holder



Aluminium roof rack



Rod Holder



Soft roof rack



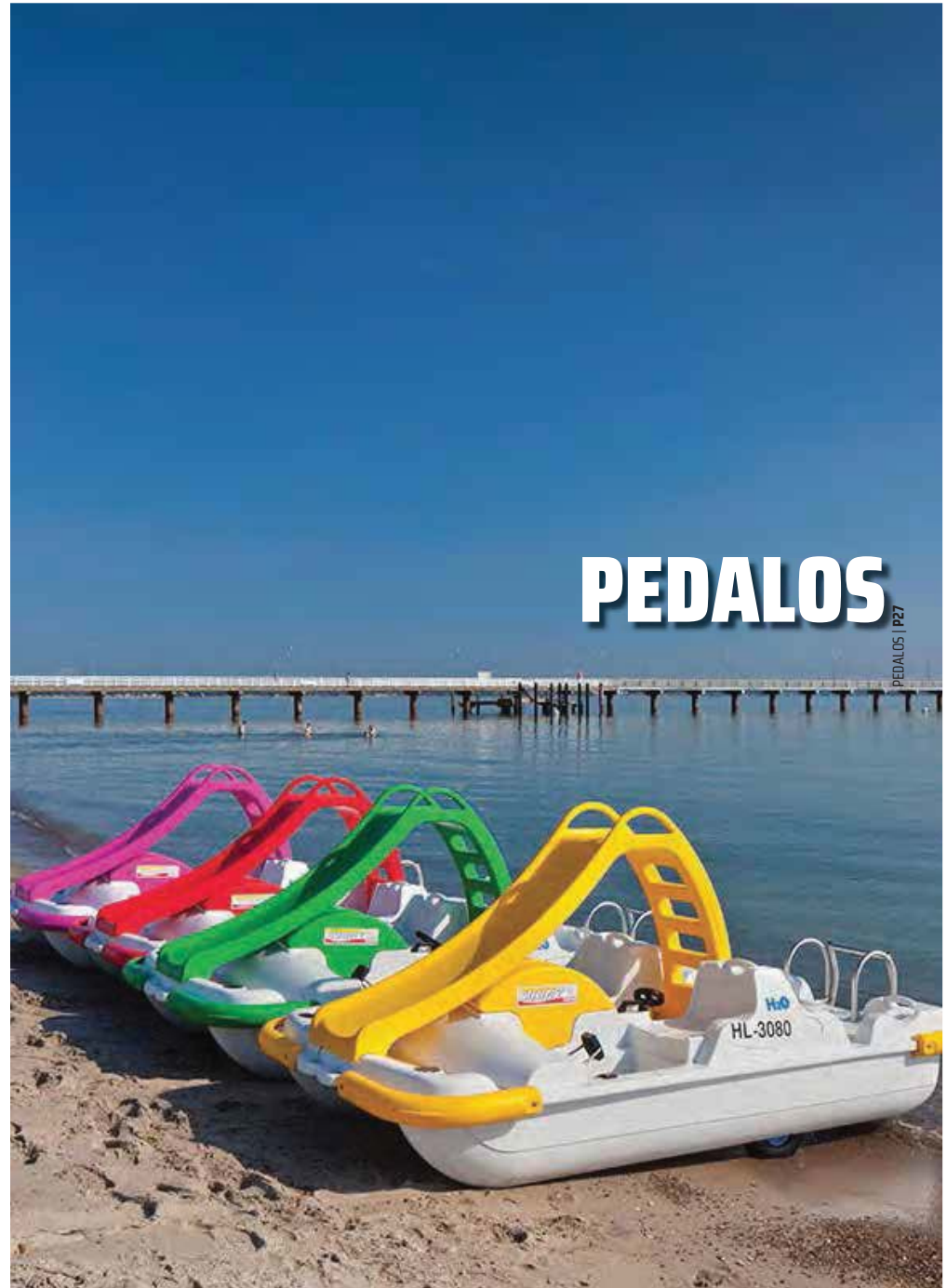
Soft helmet
Red: M - Yellow: S - L



Hard helmet
Red - Yellow - Green
S - M - L - XL



PEDALOS | P26



PEDALOS

PEDALOS | P27





MARTINI FLAMINGO

FLAMINGO by Martini is designed for 4 people, with an impressive design. Riders will have fun and enjoy the sun and the sea.

Dimensions: 330x157x90 cm
Weight: 145 kg
Fiberglass
Capacity: 4 persons = 300 kg



MARTINI UNICORN

The new Martini pedal boat is here. Designed for 4 people, with an exceptional original design. It guarantees relaxation and fun for the whole family.

Dimensions: 330x157x90 cm
Weight: 145 kg
Fiberglass
Capacity: 4 persons = 300 kg



PEDALOS | P30



MARTINI SWAN

SWAN is one of Martini's creations. Designed for 4 people, with an exceptional original design. It guarantees relaxation and fun for the whole family.

Dimensions: 330x157x90 cm
Weight: 145 kg
Fiberglass
Capacity: 4 persons = 300 kg



MARTINI DUCK

DUCK is one of Martini's latest creations. Designed for 4 people, with an exceptional original design. It guarantees relaxation and fun for the whole family.

Dimensions: 330x157x90 cm
Weight: 145 kg
Fiberglass
Capacity: 4 persons = 300 kg

PEDALOS | P31



PEDALOS | P32



SEABUGGY 4



The MARTINI SEA BUGGY 405 waterbike is designed to the standards of the legendary VW Scarab, embossed with the features of the scarab and not the stickers.

Dimensions: 405x170x90 cm

Weight: 160 kg

Fiberglass

Capacity: 5 persons = 400 kg

Available colours: yellow, green, blue, white, red, orange

SEABUGGY 330



The MARTINI'S SEABUGGY 330 is designed according to the VW's legendary scarab, embossed by the scarab and not by stickers.

Dimensions: 330x157x90 cm

Weight: 130 kg

Fiberglass

Capacity: 4 persons = 300 kg

Available colours: yellow, green, blue, white, red, orange

PEDALOS | P33



MARTINI H2O PLUS

Martini's new H2O PLUS waterbike is a new 5-seater design, offering even more space for all your family and friends. Robust, safe and flexible as ever before. Made of polyethylene with 3-layer technology and extremely durable and ecological. 100% recyclable !

Dimensions: 396x176x86 cm
 Weight: 150 kg
 Polyethylene
 Capacity: 5 persons = 375 kg
 Available in many standard and special colours

MARTINI H2O

The H2O is extremely durable and ecological! 100% recyclable. A guaranteed technology in a new shape. It offers a perfect solution for rent, taking up little space on the beach.

Dimensions: 330x160x90 cm
 Weight: 130 kg
 Polyethylene
 Capacity: 4 persons = 300 kg



MARTINI H2O SMART

The H2O- smart is guaranteeing relaxation and fun for the whole family. Robust, safe, lightweight and versatile than ever before.

Dimensions: 256x160x85 cm
 Weight: 90 kg
 Polyethylene
 Capacity: 2 adults + 2 children = 225 kg
 Available in many standard and special colours.





MARTINI JOLIE

The JOLIE is a comfortable family bike designed by Martini with large space with a sleek line and charming, simple design. Strong and reliable, characterized by its increased stability.

Dimensions: 425x167x90 cm
 Weight: 180 kg
 Fiberglass
 Capacity: 6 persons = 450 kg
 Available colours: yellow, green, blue, white, red, orange



MARTINI SUNNY TIME 4

The Sunny Time 4 is designed for 4-5 people with large deck and non-slip surfaces, while the option for a stainless guard railing offers even safer navigation.

Dimensions: 386x157x90 cm
 Weight: 150 kg
 Fiberglass
 Capacity: 5 persons = 375 kg
 Available colours: yellow, green, blue, white, red, orange



MARTINI PAGURO

Paguro is designed for five people with the top quality of MARTINI. Strong and reliable, characterized by exceptional stability. Riders will have fun and relax, enjoying the sun and the sea.

Dimensions: 390x157x85 cm
 Weight: 160 kg
 Fiberglass
 Capacity: 4 adults = 375 kg
 Available colours: yellow, green, blue, white, red, orange





MARTINI SUNNY TIME 330

The SUNNY TIME 330 has a capacity of 4 people, despite its small length. Only 330 cm! With great water stability, it offers a perfect solution for renting.

- Dimensions: 330x157x85 cm
- Weight: 120 kg
- Fiberglass
- Capacity: 4 adults = 300 kg
- Available colours: yellow, green, blue, white, red, orange



PEDALOS | P38

MARTINI SUNNY TIME 5

MARTINI'S SUNNY TIME 5 is especially designed for long, lazy days of leisure and relaxation. It is perfect for sunbathing, fitted with two really comfortable ergonomically designed sun-loungers.

- Dimensions: 386x157x90 cm
- Weight: 150 kg
- Fiberglass
- Capacity: 5 persons = 375 kg
- Available colours: yellow, green, blue, white, red, orange



PEDALOS | P39



MARTINI SUNNY TIME MOUSE

The SUNNY MOUSE is martini's smallest pedal boat, designed for 2-3 people. Despite its small size it is absolutely safe, with its own stability and excellent design.

- Dimensions: 260x157x85 cm
- Weight: 100 kg
- Fiberglass
- Capacity: 2 adults = 225 kg
- Available colours: yellow, green, blue, white, red, orange





Standard Ladder



Elite Ladder



Small Slider Seabuggy 330



Slider Seabuggy 4



Yacht Ladder



Buffer



Small Slider Polyethylene



Big Slider Polyethylene



Wheels



Springboard



Small Slider Fiberglass



Big Slider Fiberglass



SB aluminium tent



Pedalos tent

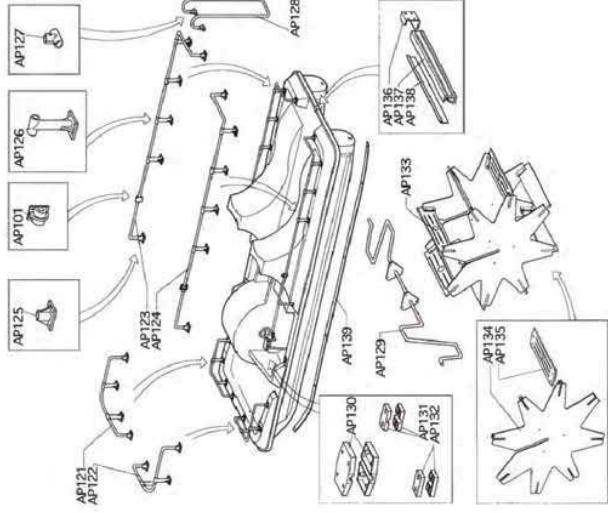
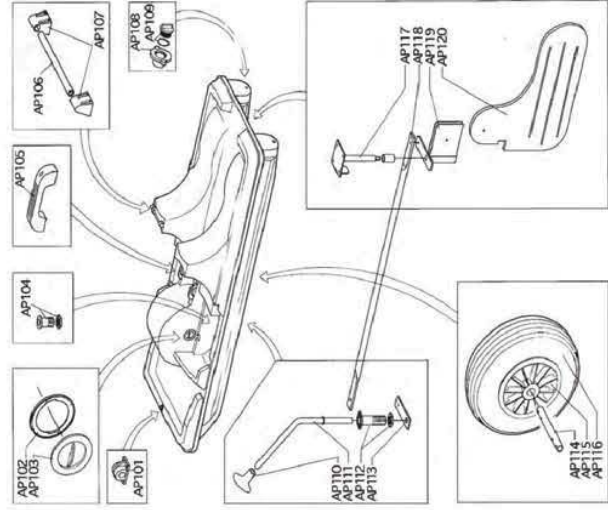


Big Inox Slider



Side SB Slider

PEDAL BOATS SPARE PARTS





SPACEBUGGY 1P44



SPACEBUGGY 1P45

SPACE BUGGY BOAT



SPACEBUGGY | P46



SPACEBUGGY



Specifications (CE certificate)

Capacity: 4 persons
 Length: 3 m
 Width: 2 m
 Height: 1.60m
 Weight: 340kg
 Colors: Red, Yellow, Green

Standard Options

- Rear boarding ladder
- S/s propeller protection grate
- Eva marine grade deck mat
- S/s grab handle
- Side entries for easy boarding from floating pontoons
- Maintenance free s/s steering
- 60mm boat rubber fender
- 4 cup holders
- 2 anchor and storage boxes
- Trimaran hull for stability and comfort ride
- Wheels

Optional

- Solar bimini hard top
- Music system

Engine Options

Outboard Engine with electric Start, Forward - Neutral - Reverse

- Petrol Outboard 8-9, 9 HP (suggested) (Tohatsu, Mercury, Yamaha, Honda)
- Electric Engine 8-10Hp

SPACEBUGGY | P47



SAXDOR | P48



SAXDOR | P49

SAXDOR

SAXDOR 205



SAXDOR | P50

SAXDOR 320GT0



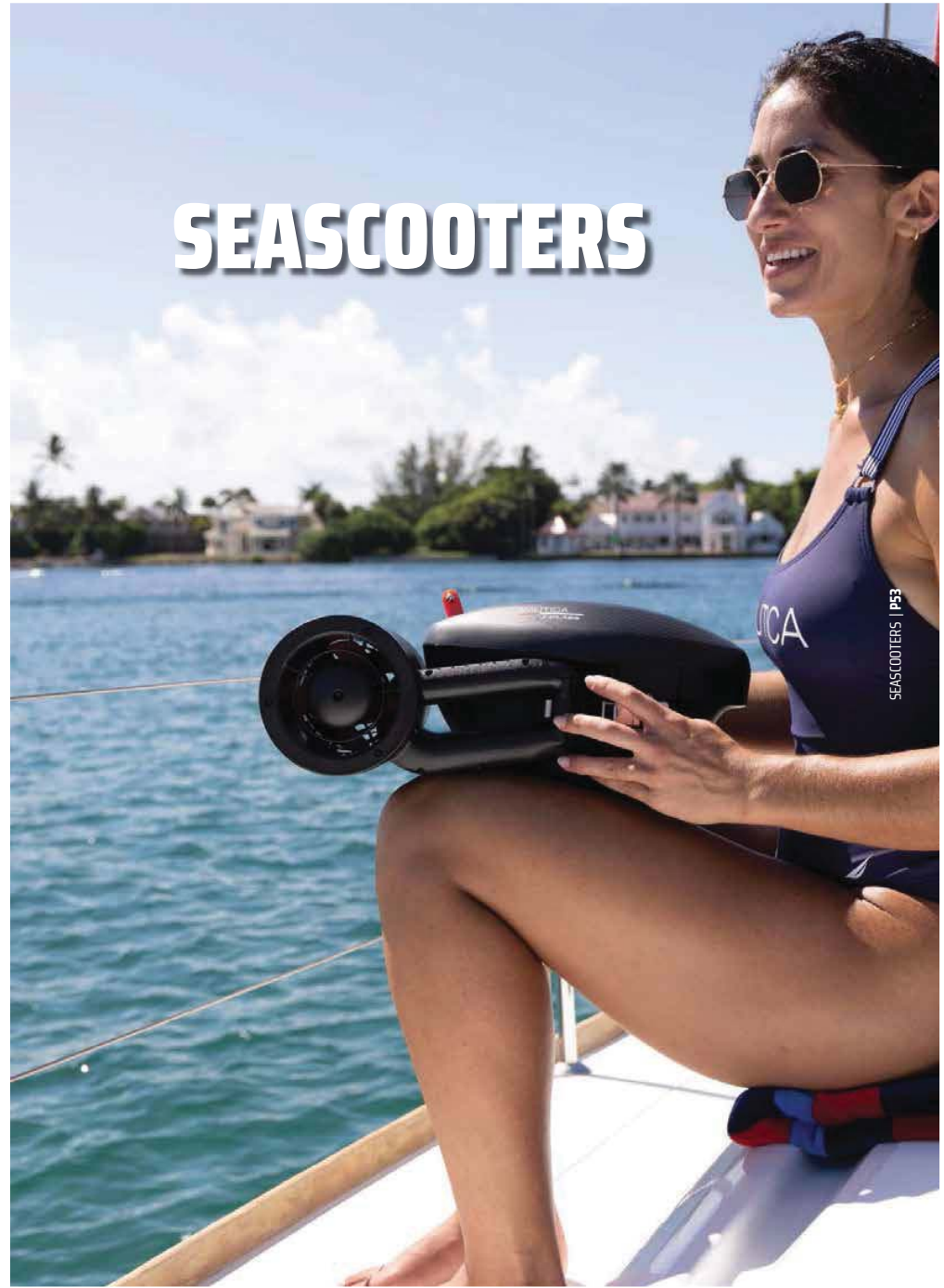
SAXDOR | P51

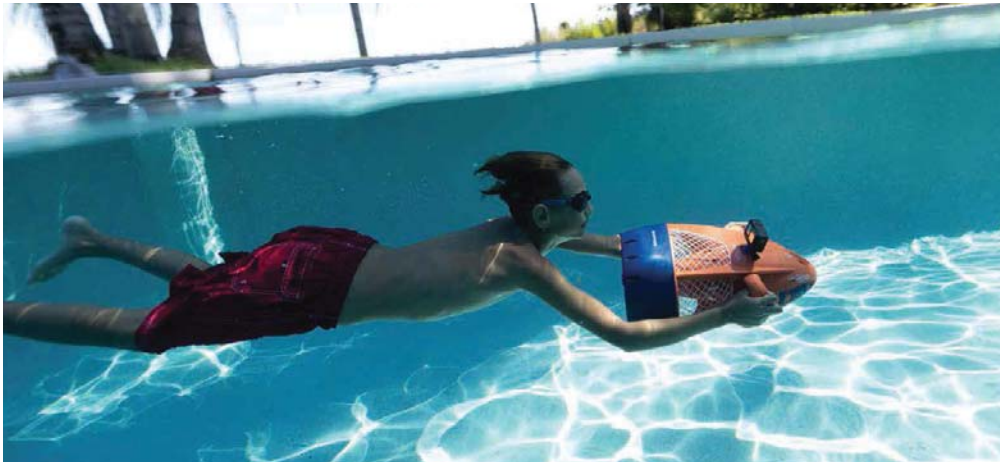
SAXDOR 200



SAXDOR 270GT0







SKIPPER



- Extremely compact design
- Rated to 15ft / 4.6m
- Run time up to 90min. with normal use
- Fully waterproof construction
- Safety features including safety grille, auto shutoff, and dual trigger operation.
- Positive buoyancy
- GoPro Mount Included
- Weight just 5.4 kg including battery

NAVIGATOR



- Run up to 60 min. with normal use
- Speed up to 4 km/h
- Rated to 30 ft / 10 m
- Fully waterproof construction
- Extremely compact design, safety features including safety grille, auto shut-off and dual trigger operation.
- Positive buoyancy (The Seascooter is designed for use in salt water. It will have less buoyancy in fresh water, and may slowly sink in fresh bodies of water.)
- Weight just 5.2 kg including battery

WAVEMAKER



- Run time up to 60 min. with normal use (Continuous use up to 40 minutes).
- Speed up to 3.2 km/h.
- Designed for one rider, ages 8 and upwards / designed to carry a maximum 70kgs).
- Heavy - Gauge PVC Bladder.
- Battery operated (rechargeable battery and charger included).
- Safety features including fully caged propeller, master switch lock and over-heating prevention system.
- Automatic shut-off function.
- Puncture repair kit.



MARINE 300



- Run up to 90 min. with normal use
- Rated to 100ft / 30m
- Speed up to 4.8 km/h
- Single Speed Control
- Waterproof construction prevents accidental flooding
- Impact resistant heavy duty rubber hull protection
- Superior safety features include: auto shut off when triggers are released, thermal switch function and water leakage sensor
- Removable buoyancy control chamber (The RDS300 is designed for use in salt water. It will have less buoyancy in fresh water, and may slowly sink in fresh bodies of water.)
- Powered by a Sealed Lead Acid Battery (Occasional battery maintenance required)
- Weight 8.2 kg including battery

MARINE 250



- Run up to 120 min. with normal use
- Rated to 100 ft / 30 m
- Speed up to 4 km/h
- Waterproof construction prevents accidental flooding
- Removable buoyancy control chamber (The RDS250 is designed for use in salt water. It will have less buoyancy in fresh water, and may slowly sink in fresh bodies of water.)
- Powered by a Sealed Lead Acid Battery (Occasional battery maintenance required)
- Weight just 8.2 kg including battery



NAVTECH 3

- Run up to 60 min with normal use
- Rated to 100ft / 30m
- Speed up to 5 KM/H
- 2-level rotational speed control
- Battery level indicator
- Superior flood prevention system
- Powered by high performance replaceable Lithium Ion battery (Upgradeable 500W or 350W battery available)
- Automatic buoyancy adjustment system (optional ballast weights for customization sold separately)
- Weight only 8.6 kg including battery



NAVTECH 2

- Run up to 75 min with normal use
- Rated to 130ft / 40m
- Speed up to 6 KM/H
- 3-level rotational speed control
- Battery level indicator
- Superior flood prevention system
- Powered by high performance replaceable Lithium Ion battery. (Upgradeable 500W battery available)
- Automatic buoyancy adjustment
- Weight only 8.6 kg including battery



NAVTECH 1

- Run time up to 90 min with normal use
- Rated to 130ft / 40m
- Speed up to 7 KM/H
- 3-level rotational speed control
- Battery level indicator
- Superior flood prevention system
- Automatic buoyancy adjustment system.
- Powered by high performance replaceable Lithium Ion battery
- Weight only 9.5 kg including battery





SEASCOOTERS | P60



J-CLASS



Lightweight and Easy to Handle - Weighing in at only 15 lbs, this sea scooter allows you to navigate through the water without tiring you out. The lightweight design also makes it easy to transport.

Powerful - The propeller and motor create a steady thrust that will zip you through the water comfortably at up to 5 mph. That is twice the average swimming speed! You will be able to cover more areas with ease! **Great Battery for Long Run Time** - The lead-acid battery is a first-class battery that is specifically designed for each sea scooter. You will be able to run the sea scooter for 90 minutes on a full charge. That's a lot of time for fun!

Superior Safety - When the sea scooter triggers are released there is an automatic shutoff so you don't have to worry about the sea scooter getting away from you.

Water Leakage Sensor - Nautica Sea Scooters are first-class and reliable, but just in case a problem develops there is a water leakage sensor. This way you will know if there is a problem right away which will make it more easily fixed.

Camera Mount - A camera mount is fixed atop the sea scooter so that you can record your adventures. This just adds to the fun and lets you relive and share experiences.

Go Deep! - With a 130ft depth rating the Nautica J-Class Sea Scooter can be used on almost any diving adventure!

- Depth Rating: 130ft (40m)
- Battery Type: Lithium-ion
- Max Speed: 5.0mph (8km/h)
- Gears: 3
- Run Time: 40 Mins
- Battery Recharge: 3-4 Hours
- Camera Mount: Yes
- Product Weight with Battery: 15 lbs (6.8 kg)
- Product Dimensions:
(Unfolded) 11.8 x 26.2 x 6.7" - 300 x 665 x 170 mm
(Folded) 16.9 x 12.1 x 6.7" - 430 x 270 x 170 mm

SEASCOOTERS | P61

SEASCOOTER ACCESSORIES + SPARE PARTS



Battery for models :
Seal / Explorer / RDS 200
Skipper / Navigator



Battery for:
Aqua Cruise / Wavemaker



Battery for models:
RDS250 / RDS 300
Marine 250 / Marine 300



Battery for models:
220Li/350Li/500Li
Navtech 1 / Navtech 2 / Navtech 3



Battery for : Pod Pro



Battery for : Yamaha 275Li



Charger for models : Seal / Explorer
Skipper / Navigator



Charger for models:
Aqua Cruise / Wavemaker



Charger for models:
RDS250 / RDS 300
Marine 250 / Marine 300



Charger for models:
220Li/350Li/500Li
Navtech 1 / Navtech 2 / Navtech 3



Charger for models: 275L / Pod Pro



Seascooter bag





SEASCATTERS | PG4



WATERPARK TUBES

SINGLE TUBES



SIZE	COLOR
42"	● ●
48"	●

Our waterpark single+double tubes/rings are made of extra durable materials for commercial use. Come in a wide variety of attractive colors and designs. The water park slide tubes are made - K80 PVC material by using high frequency welding machines. Each ring has a push-in safety valve and 2 handles ergonomically placed for a comfortable riding position.

DOUBLE TUBE



SIZE	COLOR
42"	● ●
46"	●

wibit

NEW
KidsCircuit



NEW
SportsParks



NEW
specially
designed for
kids from 4
years

NEW
Products and
Tracks



YOUR PARTNER.
FOR HAPPINESS.



OPEN WATER COMBINATIONS
FOR KIDS 4+





AQUACENTER - SIDERIS MIROS

Heraklion Crete Greece

tel: +30 2810 372992

www.aquacenter.gr | e-mail: info@aquacenter.gr